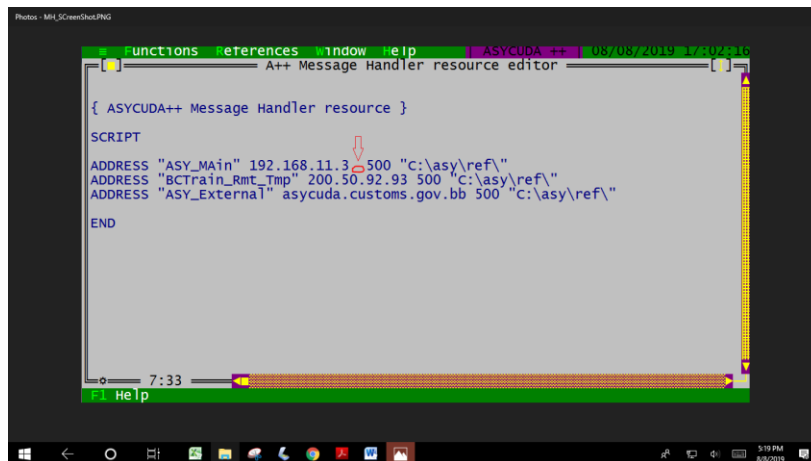


## HOW TO REPLACE MH.SCR FILE

- Save a copy of the MH.SCR file locally to your machine.
- Replace the file located in the following path with the one saved from the web portal

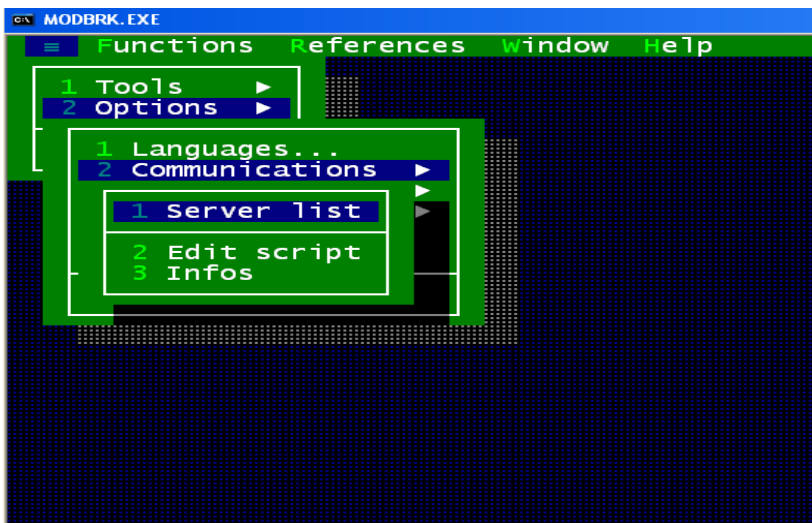
C: ASY → SYS → CNF → MH.SCR

- Open the ASYCUDA Module that you work with and follow the subsequent steps:  
(1) Options → (2) Communications → (2) Edit Script  
Remove the additional space between 3 and 500 as shown below.

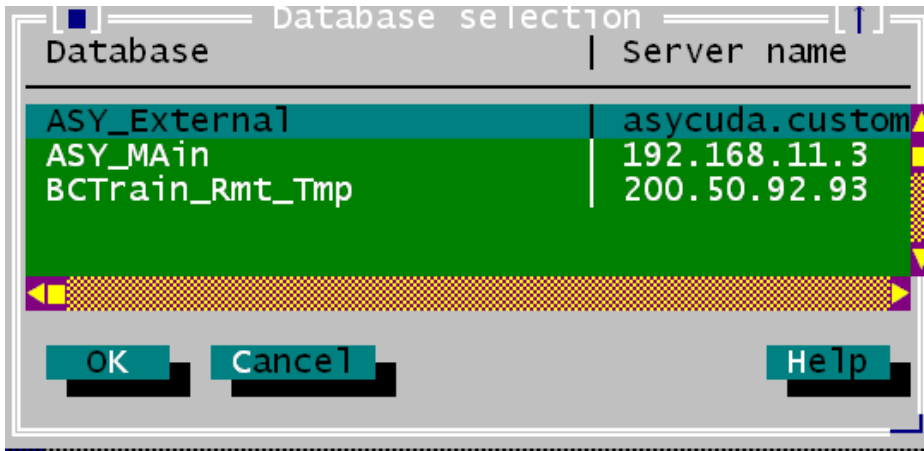


```
{ ASYCUDA++ Message Handler resource }  
SCRIPT  
ADDRESS "ASY_Main" 192.168.11.3 500 "c:\asy\ref\  
ADDRESS "BCTrain_Rmt_Tmp" 200.50.92.93 500 "c:\asy\ref\  
ADDRESS "ASY_External" asycuda.customs.gov.bb 500 "c:\asy\ref\  
END
```

- Save the script by accepting the changes.
- Follow the path highlighted below



- Click on Server List and the below screen will appear



- Select the ASY\_External and click the ok button.
- Proceed to login to ASYCUDA